

# DUBLIN COUNTY ATHLETIC BOARD

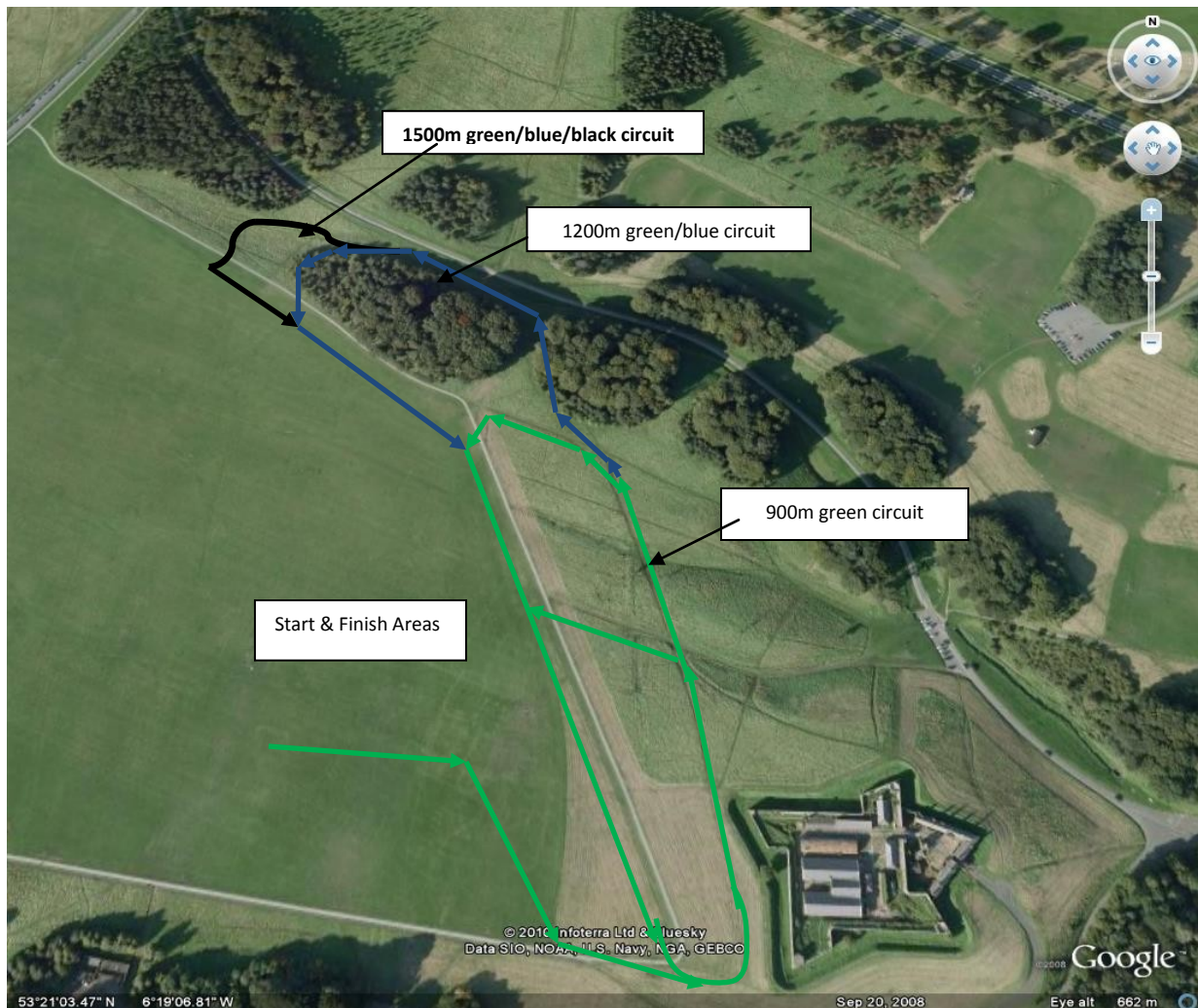
## Juvenile League 2 & Novice Cross Country Championships

Phoenix Park– Sunday 6<sup>th</sup> October 2019

<b>Event Schedule</b>
-----------------------

<b>Event</b>	<b>Distance</b>	<b>Start Time</b>
<b>U9 Girls</b>	<b>500m</b>	<b>11.00</b>
<b>U9 Boys</b>	<b>500m</b>	<b>11.05</b>
<b>U10 Girls</b>	<b>700m</b>	<b>11.10</b>
<b>U10 Boys</b>	<b>700m</b>	<b>11.16</b>
<b>U11 Girls</b>	<b>900m</b>	<b>11.22</b>
<b>U11 Boys</b>	<b>900m</b>	<b>11.30</b>
<b>U12 Girls</b>	<b>1200m</b>	<b>11.38</b>
<b>U12 Boys</b>	<b>1200m</b>	<b>11.47</b>
<b>U13 Girls</b>	<b>1300m</b>	<b>11.56</b>
<b>U13 Boys</b>	<b>1300m</b>	<b>12.05</b>
<b>U14 Girls</b>	<b>1500m</b>	<b>12.14</b>
<b>U14 Boys</b>	<b>1500m</b>	<b>12.24</b>
<b>U15 Girls</b>	<b>2000m</b>	<b>12.34</b>
<b>U15 Boys</b>	<b>2000m</b>	<b>12.46</b>
<b>U16/17/18/ Junior (U19/20) G</b>	<b>2500m</b>	<b>12.58</b>
<b>U16 Boys</b>	<b>2500m</b>	<b>13.13</b>
<b>U17/ U18/Junior (U19/20) Boys</b>	<b>4000m</b>	<b>13.28</b>
<b>Novice Ladies</b>	<b>4000m</b>	<b>13.45</b>
<b>Novice Men</b>	<b>6000m</b>	<b>14.15</b>

## Juvenile League 2 & Novice Championships – Sunday 6<sup>th</sup> Oct 2019



U9's (500m), 10's (700m) and 11's (900m) will follow the green course only with their starts at different points and same finish area.

U12's (1200m) will complete green/blue circuit. Starting and finishing in the same area.

U13's (1300m) will complete green/blue circuit plus 100m. Start 100m before the finish area.

U14's (1500m) will complete 1 green/blue/black circuit. Starting and finishing in the same area.

U15's (2000m) will complete 1 green (900m) & 1 green/blue circuit's less 100m. Start 100m beyond the finish area.

U16 boys & U16/17/18 & junior (U19 /20 girls) (2500m) will complete 2 green/blue (1200m) circuits + 100m. Start 100m before the finish area.

U17/18/junior (U19/20 boys) (4000m) will complete 1 green (900m) circuit & 2 green/blue/black (1500m) circuits starting 100m before the finish area.

Novice Women (4K) will complete 1 small lap and 2 green/blue/black (1500m) circuits and Novice Men (6K) will complete 4 green/blue/black (1500m) circuits

Please be advised starts for juvenile areas may be different to what's outlined above and all races will finish in the same area.

